

www.szbondway.com



ES260V

Digital Veterinary Color
Doppler Ultrasound System

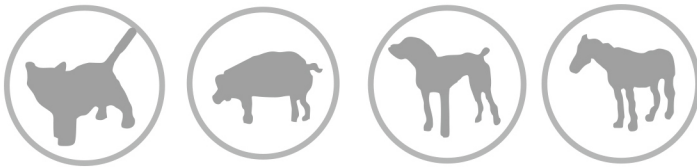
 **BONDWAY**
since 2006



Shenzhen Bondway Electronics Co. Ltd

ES260V

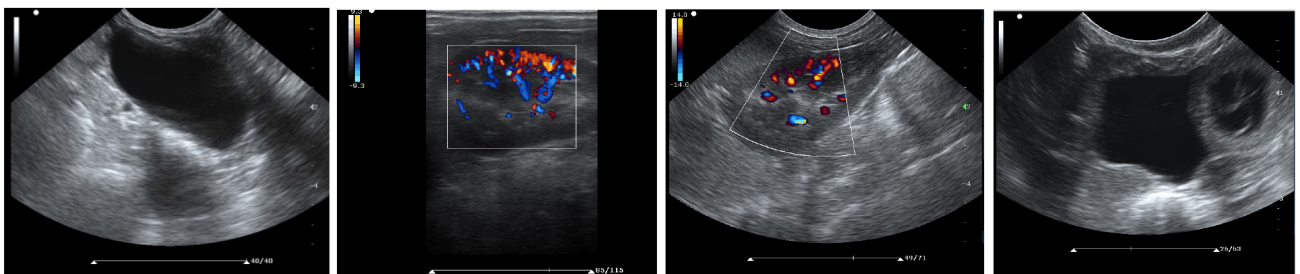
Digital Veterinary Color Doppler Ultrasound Imaging System



Advanced Imaging Technologies

- **Phase-inversion harmonic imaging+frequency compound imaging**
Ensure excellent penetration and more delicate 2D image
- **Spatial compound imaging**
Combining images from multi-angle to reduce artifact and improve image quality
Compounding images from multiple scanned angles to reduce artifact and improve image quality
- **Speckle reduction technology**
Reduce speckle noise and improve image quality
- **Multiple imaging modes**
B/C/PW/CW/BCD triplex imaging, Wide-angle Steer scanning imaging, Panoramic imaging, Trapezoid imaging (linear probe only), Anatomical M mode, Color M mode
- **Color Doppler enhancement technology**
Effectively suppress color doppler flashing noise and improve the color flow resolution and sensitivity
- **Multi-Beam Formation technology**
Increases time resolution and frame rate
- **One key Image Optimization**
Automatically adjust imaging parameters to optimize the image with one key

Clinical Images



ES260V

• Versatil Probe Options

Versatile probe options: micro-convex probe, linear probe, intrarectal linear probe, Phase array probe, etc.



• User-friendly Design



Adjustable monitor up to 90°



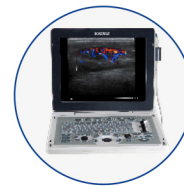
Compact and lightweight



Built-in lithium battery



Backlight control pannel



15" LCD



Dual transducer connector



Various storage possibilities

